





Who's who in the LCOs and UDHM Clinical Group

October 2025

Senior Leadership Team

 Chief Executive Patricia Davies	 Medical Director Dr Karim Adab	 Director of Nursing & Professional Lead Layla Alani	 Director of Performance and Operations Mark Edwards	 Director of Workforce & OD Vicki Hall	 Director of Finance David Pearson	 Executive Director of Adult Social Services (Manchester) Bernie Enright
Office of the Medical Director		Office of the Director of Nursing and Professional Lead	Operations	Workforce	Finance	<div>Shared Director of Adult Social Services roles with the local authorities form part of LCO Senior Leadership Team</div>  Interim Director for Adults & Wellbeing (Trafford) Maggie Kufeldt ↓ Adult Social Care Teams (including Integrated Neighbourhood Teams with health)
Deputy Medical Director Dr Lauren Wentworth	Associate MD - Quality & Safety and Digital Dr Helena Mulkeen	Deputy Director of Nursing & AHPs Vacant	Deputy Director of Performance & Operations Danielle Koomen	Assistant Director Workforce & OD Ruth Williamson	Head of Financial Services Sue Sweeney	
Associate MD - Children's Population Health Dr Nitwin Panwar	Hospital Medical Director (UDHM) Martin Ashley (interim)	Lead Nurse/Professional - Workforce, Education & R&I Vacant	Estates	OD		
Programme Manager Healthy Hearts Nana Acheampong	Programme Director for Long Term Conditions Emma Gilbey	Lead Nurse/Professional - Quality, Safety & Patient Experience Vacant	Senior Programme Manager - Infrastructure Chris Fox	Head of Organisation Development Louise McDonald		
Primary Care Locality Lead (South & Trafford) Jo Smithson	Primary Care Locality Lead (North & Central) Amanda Collins	Matron/Professional - Digital Anna Mackway-Jones		Communications		
Community Medicines Optimisation Service				Head of Comms & Engagement Chris Horner		
Associate Director of Pharmacy Nicola Hayes	Head of Pharmacy Nerea Asiain					
Lead Pharmacist Debra Morris	Lead Pharmacist Francine Radivan					

Adult Community & Neighbourhood Care	
Clinical Head of Division Dr Helena Mulkeen	
Associate Director of Performance & Operations Kristina Wright	
Head of Nursing Alex Barker	
Head of AHPs (LCO-wide) Laura O'Shea	
North and Central Manchester	
Clinical Director Dr Santosh Golkar	General Manager Vacant
Lead AHP Tracy Walker	Service Manager Jack Crawford
Lead Nurse - North Clair Priestley	Lead Nurse - Central Gill Acreman
Matron - North Cheryl Madeley	Matron - Central Tracy Atherton
Matron - Quality Sarah Armistead	Specialist Matron (Lower Limb) Kathryn Taylor
Neighbourhood Leads John Egerton Sarah Lake Mags Doherty Lizzie Hughes Angela Beacon	
Trafford and South Manchester	
Clinical Director Dr Oli Atkinson	General Manager Phil Brown
Lead AHP Catherine Roberts	Service Manager Joe Llewellyn
Lead Nurse - Trafford Deborah Smith	Lead Nurse - South Bindu Kurien
Matron - Trafford Suzanne Leonard	Matron - South Gemma Hurst
Matron - Quality Lynette Hayes	Specialist Matron (Bladder and Bowel) Suzanne Ryder
Neighbourhood Leads Julia Worthington Tom Bassford Adrian Smith Annabel Hammond	
AAA Screening Programme Manager Angela Aldridge	

Children's Community Health	
Clinical Head of Division Dr Nitwin Panwar	
Associate Director of Performance & Operations Nicola Marsden	
Head of Nursing Jill Tomlinson	
Head of AHPs (LCO-wide) Laura O'Shea	
Care Division Wide Posts	
Lead Nurse Claire Jackson	Clinical Director Dr Lisa Redfern
Children's Health Support Service Manager Pauline Jarvis	Lead AHP Louise Lee
	Service Manager Michael Hargreaves
Manchester: Health Visiting and Community Health Admin services	
General Manager Jenny Lewis (interim)	Head of Service Rohit Nanji (interim)
Head of Service Maria Graham	Head of Service Lisa Sanchez
Manchester: Schools Health and Orthoptics	
General Manager Pete Smith	Head of Service - School Health Sarah Jennings (clinical lead)
Head of Service - School Health Kimberley Evans (Public Health/Ops Lead)	
Manchester: CCNT, Community Paediatrics and AHP services	
General Manager Maria Oakley	Matron - CCNT Soraya Begum
Matron - CCNT Sarah Clayhills	
Trafford: Health Visiting & Schools Health	
General Manager Kate Murdock	Head of Service 0-19 Hannah Marsh
Head of Service Denise Gaston	Head of Service Susan Blake
Trafford: Paediatrics, CCNT, AHP Services & Associated Specialist Services	
General Manager Sarah Miley	Matron - CCNT James Ashton

Urgent Care & Specialist Services	
Clinical Head of Division Vacant	
Associate Director of Performance & Operations Joanna Williams	
Head of Nursing Jonathon Elliott (interim)	
Head of AHPs (LCO-wide) Laura O'Shea	
Specialist Services (Sickle Cell & Thalassaemia (SCT), Palliative Care (PC) & Learning Disability (LD))	
Clinical Lead - LD Out to advert	Clinical Lead - PC Out to advert
Head of Nursing - LD Urubia Eronini-Ukah (interim)	General Manager - SCT/LD Helen Geach
Service Manager - Palliative Kerry Briggs	Matron LD Nicola Sunderland
Matron SCT Marilyn Burton	Specialist Matrons - PC Adele Brian, Jennifer Allen, Debra Nice, Kelly Foster, Maria Hurley
Urgent Care - Manchester North & Central and Trafford & Manchester South Care Service wide posts	
Clinical Director (Urgent Care) Lucy Campbell	Lead AHP Vacant
Clinical Lead (Urgent Care) Out to advert	General Manager (H@H) Mike Channon
Matron - Quality Stacey Scudder	
Manchester Control Room, and North & Central Service Suites	
MCR Lead Carol Kavanagh	Lead ACPs Jason Holland, Sophie Wallington
Service Manager On secondment	Clinical Lead (D2A) On secondment
Matron Maxine Howarth	Matron Louise Lewis
Trafford Control Room, and South & Trafford Service Suites	
MCR/TCR Lead Karen Thomas	Service Manager Wendie Jackson
Lead ACPs Lesley Lyons, 1x vacancy	Matron Andrea Blake

University Dental Hospital of Manchester	
Hospital Medical Director Martin Ashley (interim)	
General Manager Sarah Hardman	
Lead Nurse Ellie Barclay	
Care Division Wide Posts	
Dental Education Manager Karelina Bull	Dental Matron Michelle Hickman
University Dental Hospital	
Clinical Director/HCCIO Richard Needham	Clinical Lead (Orthodontics) Vicki Elton
Clinical Lead (Dental Education) David Waring	Clinical Lead (Clin Effectiveness, Research & Innovation) Madelene Storey
Clinical Lead (Oral medicine, Radiology & Pharmacy) Rigel Allan	Clinical Lead (Resus & Sedation) Andrew Geddis-Regan
Clinical Lead (Job Plans/Workforce) Mariyah Nazir	Clinical Lead (HCCIO) Richard Needham
Dental Laboratories	
Head of Dental Laboratories Paul Murphy	
Community Dental Services	
Clinical Director Jenny Headey	Service Manager Tracy Rodwell

-  = Corporate Team
-  = Care Division
-  = Care Service
-  = Adult Social Care

Please note that at Care Division and Care Service level, this structure chart only shows operational and clinical posts involved in the One MFT Phase 3 consultation and not posts that were not included. Full structure charts will follow.

LCO Senior Leadership Team and Offices

October 2025



Chief Executive
Patricia Davies



Medical Director
Dr Karim Adab

Office of the Medical Director
Deputy Medical Director Dr Lauren Wentworth
Assoc MD - Quality & Safety and Digital Dr Helena Mulkeen
Assoc MD - Children's Population Health Dr Nitwin Panwar
Hospital Medical Director (UDHM) Martin Ashley (interim)
Primary Care Locality Lead (N&C) Jo Smithson
Primary Care Locality Lead (S&T) Amanda Collins
Programme Director for Long Term Conditions Emma Gilbey
Programme Manager for Healthy Hearts Nana Acehampong
Associate Director of Pharmacy Nicola Hayes

Community Medicines Optimisation Service
Head of Pharmacy Nerea Asiain
Lead Pharmacist Franscine Radivan
Lead Pharmacist Debra Morris



Director of Nursing & Professional Lead
Layla Alani

Office of the Director of Nursing and Professional Lead
Deputy Director of Nursing & AHPs Vacant
Lead Nurse/Professional - Workforce, Education & R&I Vacant
Lead Nurse/Professional - Quality, Safety & Patient Experience Vacant
Matron/Professional - Digital Anna Macway-Jones



Director of Performance and Operations
Mark Edwards

Operations
Deputy Director of Performance & Operations Danielle Koomen
Estates
Senior Programme Manager - Infrastructure Chris Fox



Director of Workforce & OD
Vicki Hall

Workforce
Assistant Director Workforce & OD Ruth Williamson
OD
Head of Organisation Development Louise McDonald
Communications
Head of Comms & Engagement Chris Horner



Director of Finance
David Pearson

Finance
Head of Financial Services Sue Sweeney

Adult Community and Neighbourhood Care - Care Division

October 2025

Care Division Leadership Quad			
Clinical Head of Division Dr Helena Mulkeen	Associate Director of Performance & Operations Kristina Wright	Head of Nursing Alex Barker	Head of AHPs (LCO-wide) Laura O'Shea
Care Services			
North and Central Manchester		Trafford and South Manchester	
Clinical Director Dr Santosh Golkar	General Manager Vacant	Clinical Director Dr Oli Atkinson	General Manager Phil Brown
Lead AHP Tracy Walker	Service Manager Jack Crawford	Lead AHP Catherine Roberts	Service Manager Joe Llewellyn
Lead Nurse - North Clair Priestley	Lead Nurse - Central Gill Acreman	Lead Nurse - Trafford Deborah Smith	Lead Nurse - South Bindu Kurien
Matron - North Cheryl Madeley	Matron - Central Tracy Atherton	Matron - Trafford Suzanne Leonard	Matron - South Gemma Hurst
Matron - Quality Sarah Armistead	Specialist Matron (Lower Limb) Kathryn Taylor	Matron - Quality Lynette Hayes	Specialist Matron (Bladder and Bowel) Suzanne Ryder
Neighbourhood Leads <ul style="list-style-type: none">John Egerton - Hulme, Moss Side & Rusholme/Chorlton, Whalley Range & FallowfieldSarah Lake - Gorton & Levenshulme/North Manchester programmeMags Doherty - Ardwick & Longsight/Manchester City CentreLizzie Hughes - Cheetham & Crumpsall/Higher Blackley, Harpurhey & CharlestownAngela Beacon - Ancoats, Bradford & Clayton/Miles Platting, Newton Heath & Moston		Neighbourhood Leads <ul style="list-style-type: none">Tom Bassford - Wythenshawe (Baguley, Woodhouse Park & Sharston) and Wythenshawe (Brooklands) & NorthendenAnnabel Hammond - Didsbury, Chorlton Park & Burnage/Withington & Old MoatAdrian Smith - North Trafford/West TraffordJulia Worthington - Central Trafford/South Trafford	AAA Screening Programme Manager Angela Aldridge

Children’s Community Health - Care Division

October 2025

Care Division Leadership Quad					
Clinical Head of Division Dr Nitwin Panwar		Associate Director of Performance & Operations Nicola Marsden		Head of Nursing Jill Tomlinson	
				Head of AHPs (LCO-wide) Laura O'Shea	
Care Division Wide Posts		Lead Nurse Claire Jackson	Clinical Director Dr Lisa Redfern	Lead AHP Louise Lee	Children's Health Support Service Manager Pauline Jarvis
				Service Manager Michael Hargreaves	
Care Services					
Manchester: Health Visiting and Community Health Admin services			Trafford: Health Visiting & Schools Health		
General Manager Jenny Lewis (interim)		Head of Service Rohit Nanji (interim)		General Manager Kate Murdock	
Head of Service Maria Graham		Head of Service Lisa Sanchez		Head of Service 0-19 Hannah Marsh	
				Head of Service Denise Gaston	
				Head of Service Susan Blake	
Manchester: Schools Health and Orthoptics			Trafford: Paediatrics, CCNT, AHP Services & Associated Specialist Services		
General Manager Pete Smith		Head of Service - School Health Sarah Jennings (clinical lead)		General Manager Sarah Miley	
Head of Service - School Health Kimberley Evans (Public Health/Ops Lead)				Matron - CCNT James Ashton	
Manchester: CCNT, Community Paediatrics and AHP services					
General Manager Maria Oakley		Matron - CCNT Soraya Begum			
Matron - CCNT Sarah Clayhills					

Urgent Care and Specialist Services - Care Division

October 2025

Care Division Leadership Quad

Clinical Head of Division Vacant	Associate Director of Performance & Operations Joanna Williams	Head of Nursing Jonathon Elliott (interim)	Head of AHPs (LCO-wide) Laura O'Shea
--	--	--	--

Care Services

Specialist Services (Sickle Cell & Thalassaemia (SCT), Palliative Care (PC) & Learning Disability (LD))	
Clinical Lead - LD Out to advert	Clinical Lead - PC Out to advert
Head of Nursing - LD Urubia Eronini-Ukah (interim)	General Manager - SCT/LD Helen Geach
Service Manager - Palliative Kerry Briggs	Matron LD Nicola Sunderland
Matron SCT Marilyn Burton	Specialist Matrons - PC Adele Brian, Jennifer Allen, Debra Nice, Kelly Foster, Maria Hurley

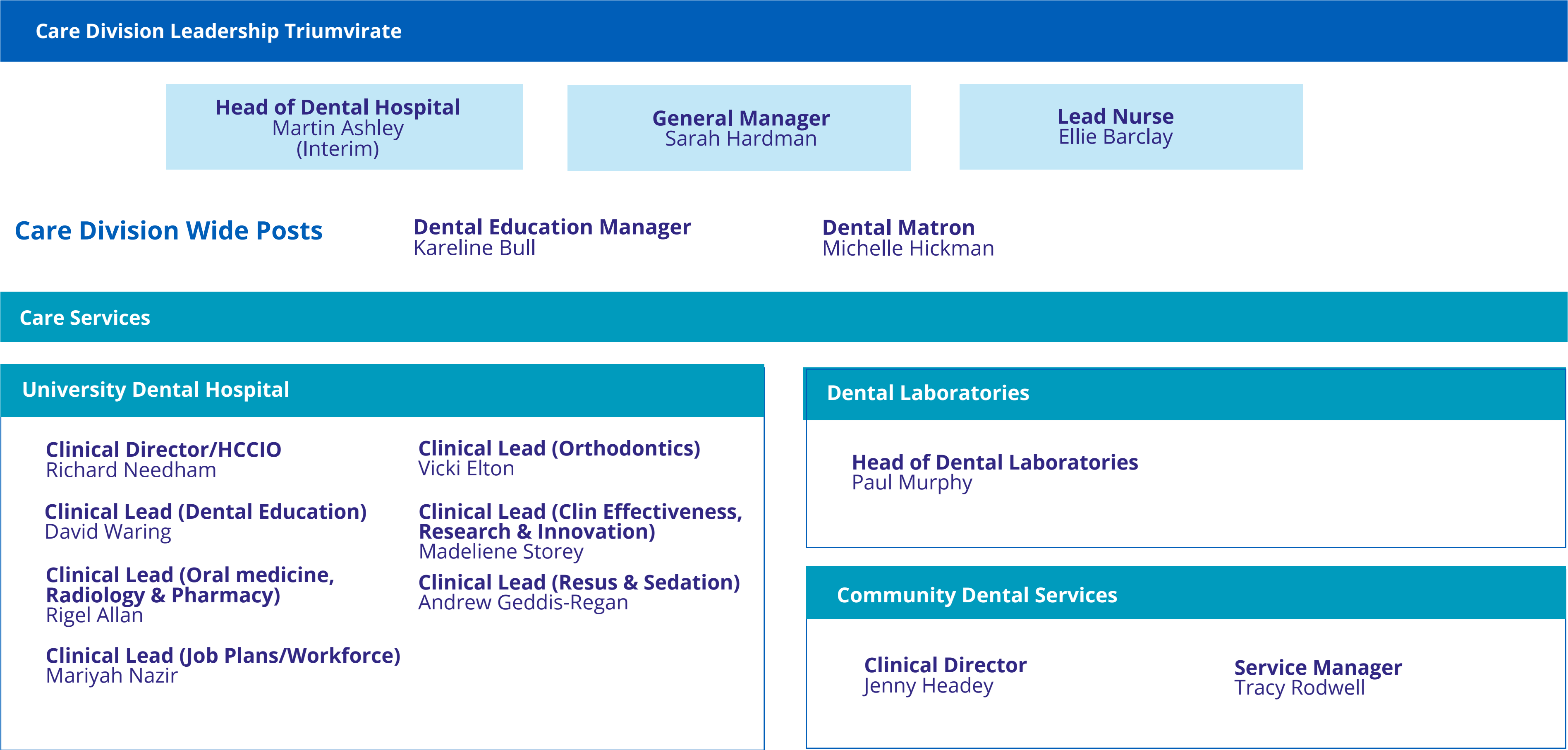
Urgent Care - Manchester North & Central and Trafford & Manchester South Care Service wide posts	
Clinical Director (Urgent Care) Lucy Campbell	Lead AHP Vacant
Clinical Lead (Urgent Care) Out to advert	General Manager (H@H) Mike Channon
Matron - Quality Stacey Scudder	

Manchester Control Room, and North & Central Service Suites	
MCR Lead Carol Kavanagh	Lead ACPs Jason Holland, Sophie Wallington
Service Manager On secondment	Clinical Lead (D2A) On secondment
Matron Maxine Howarth	Matron Louise Lewis

Trafford Control Room, and South & Trafford Service Suites	
MCR/TCR Lead Karen Thomas	Service Manager Wendie Jackson
Lead ACPs Lesley Lyons, 1x vacancy	Matron Andrea Blake

University Dental Hospital of Manchester - Care Division

October 2025



Manchester and Trafford - Neighbourhood Leads

October 2025

Neighbourhood services fall under the new North and Central Manchester care services and South Manchester and Trafford care services teams within the new Adult and Neighbourhood Care Division. Each neighbourhood lead looks after two neighbourhoods.

North and Central Manchester neighbourhoods and leads

<div>Cheetham and Crumpsall</div> <div>Lizzie Hughes</div> <div>Harpurhey, Higher Blackley and Charlestown</div>	<div>Ancoats,Bradford and Clayton</div> <div>Angela Beacon</div> <div>Miles Platting, Newton Heath and Moston</div>	<div>Gorton and Levenshulme</div> <div>Sarah Lake</div> <div>North Manchester Programme *</div>	
<div>Ardwick and Longsight</div> <div>Mags Doherty</div> <div>City Centre **</div>	<div>Hulme, Moss Side and Rusholme</div> <div>John Egerton</div> <div>Chorlton, Whalley Range and Fallowfield</div>	<div>*Provides extra support across the North Manchester footprint around key strategic projects and complexity of population need.</div> <div>**Covers the City Centre of Manchester. Work is underway looking at wider support infrastructure required for this neighbourhood alongside the neighbourhood lead role (eg Health Development Coordinator support and GP lead role).</div>	

South Manchester and Trafford neighbourhoods and leads

<div>Central Trafford</div> <div>Julia Worthington</div> <div>South Trafford</div>	<div>North Trafford</div> <div>Adrian Smith</div> <div>West Trafford</div>	<div>Didsbury, Chorlton Park and Burnage</div> <div>Annabel Hammond</div> <div>Withington and Old Moat</div>	<div>Wythenshawe (Brooklands) and Northenden</div> <div>Tom Bassford</div> <div>Wythenshawe (Baguley, Woodhouse Park and Sharston)</div>
--	--	--	--

Central and South Trafford - Altrincham, Bowdon, Broadheath, Hale Barns, Hale Central, Timperley, Ashton upon Mersey, Brooklands, Priory, St Mary's, Sale Moor

North and West Trafford - Bucklow-St-Martins, Davyhulme East, Davyhulme West, Flixton, Urmston, Partington, Clifford, Gorse Hill, Longford, Stretford.